

Measuring for Sash Replacement

To achieve an accurate measurement for replacing your sash, please follow these instructions:

1. Measure where the sash track meets the sidewall of the hood from the furthest outside point, left to right. **DO NOT measure from the inside of the sash track!**
Please refer to the sash diagram provided for further detail.

Towards the top of the diagram you will see measurement "A". This will be the first measurement required for sizing your sash. Measurement "B" represents the height of the sash including the sash lift.

To ensure the correct sash is constructed, please provide the following:

- 1) Specify the number of counterweights attached to the sash. (1 or 2) _____
- 2) Specify the size of each counterweight. (L X W X H / or Diameter)
Weight 1: _____ X _____ X _____ Weight 2: _____ X _____ X _____

- 3) Provide measurement "A" (outside track to outside track).

Measurement A: _____

- 4) Provide measurement "B" (including sash lift).

Measurement B: _____

- 5) Provide measurement of actual sash W x H x D (includes sash frame and sash lift).

_____ W x _____ H x _____ D

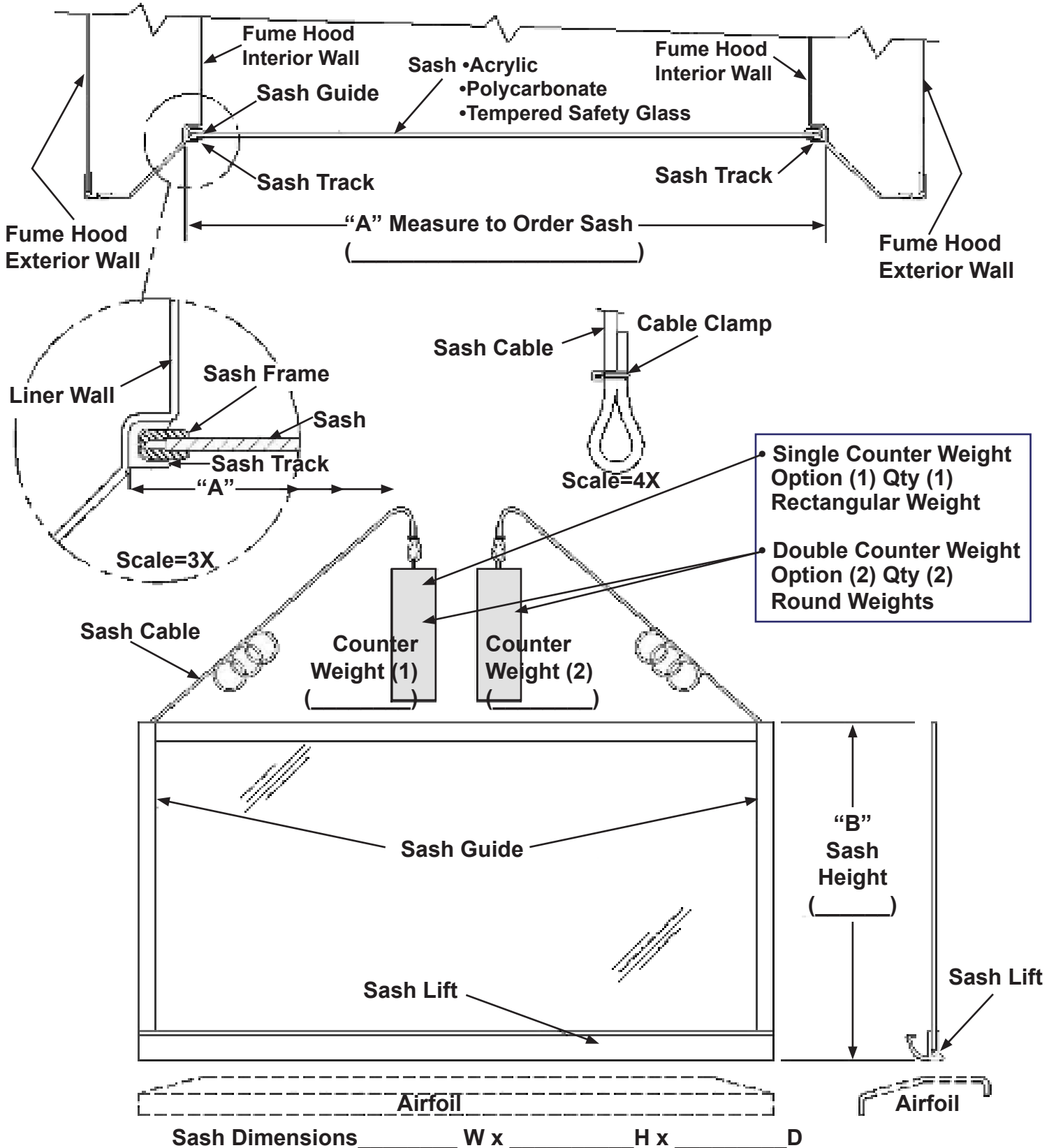
- 6) Provide model number and serial number of your fume hood.

Model: _____ Serial: _____

If you need further assistance, please contact customer service at (816)796-2900.



Serial Number _____ Model Number _____



Visit www.HEMCOcorp.com